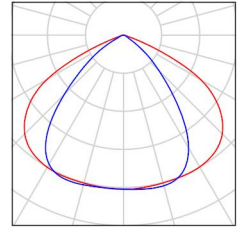


Operator
 Telephone
 Fax
 e-Mail

Outdoor / Luminaire parts list

8 Pieces 20211110 FILUX_ELG_200W-Lumileds-3030-
 Ra70 (Type 1)
 Article No.: 20211110
 Luminous flux (Luminaire): 28770 lm
 Luminous flux (Lamps): 28772 lm
 Luminaire Wattage: 200.3 W
 Luminaire classification according to CIE: 100
 CIE flux code: 59 92 99 100 100
 Fitting: 1 x User defined (Correction Factor
 1.000).

See our luminaire
 catalog for an image of
 the luminaire.

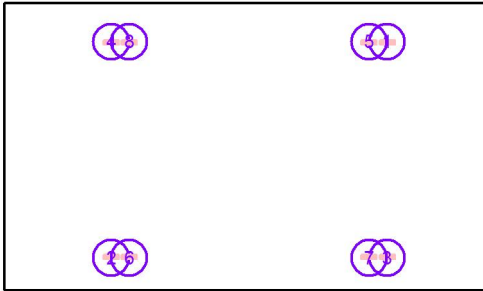


Operator
 Telephone
 Fax
 e-Mail

Outdoor / Luminaires (coordinates list)

20211110 FILUX_ELG_200W-Lumileds-3030-Ra70 (Type 1)

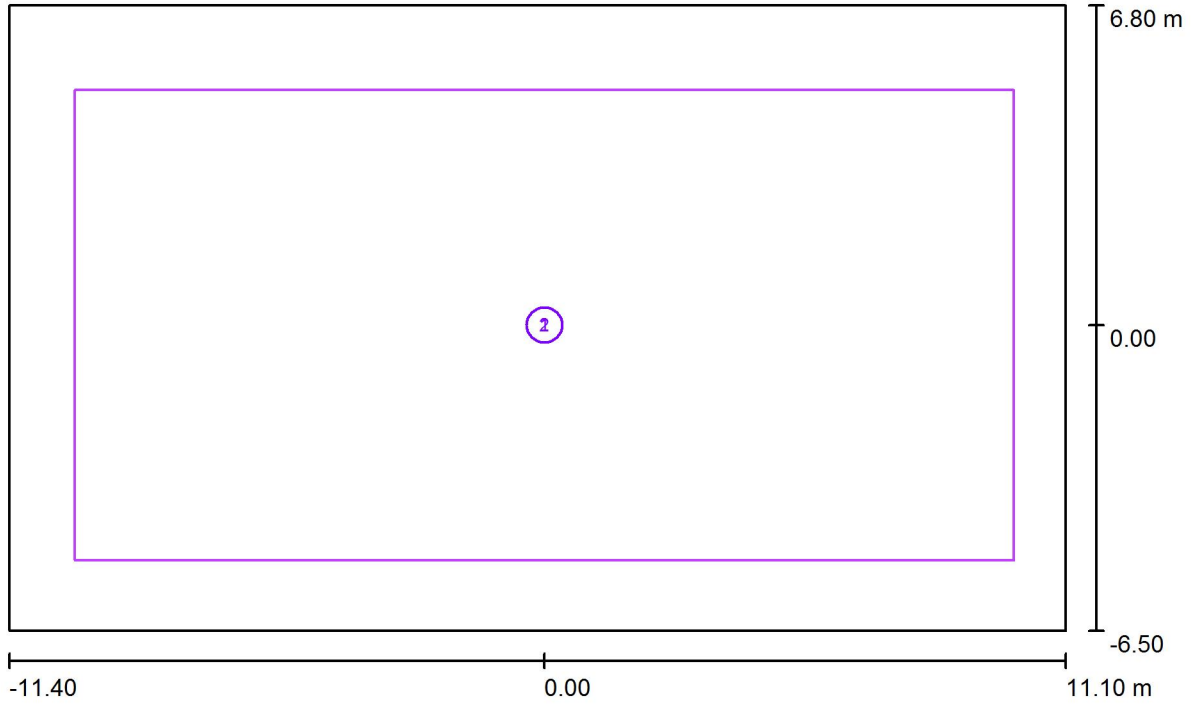
28770 lm, 200.3 W, 1 x 1 x User defined (Correction Factor 1.000).



No.	Position [m]			Rotation [°]		
	X	Y	Z	X	Y	Z
1	6.420	5.000	6.000	-23.0	0.0	0.0
2	-6.420	-5.000	6.000	-23.0	0.0	-180.0
3	6.420	-5.000	6.000	-23.0	0.0	-180.0
4	-6.420	5.000	6.000	-23.0	0.0	0.0
5	5.580	5.000	6.000	-23.0	0.0	0.0
6	-5.580	-5.000	6.000	-23.0	0.0	-180.0
7	5.580	-5.000	6.000	-23.0	0.0	-180.0
8	-5.580	5.000	6.000	-23.0	0.0	0.0

Operator
 Telephone
 Fax
 e-Mail

Outdoor / Calculation Grid (Coordinates List)



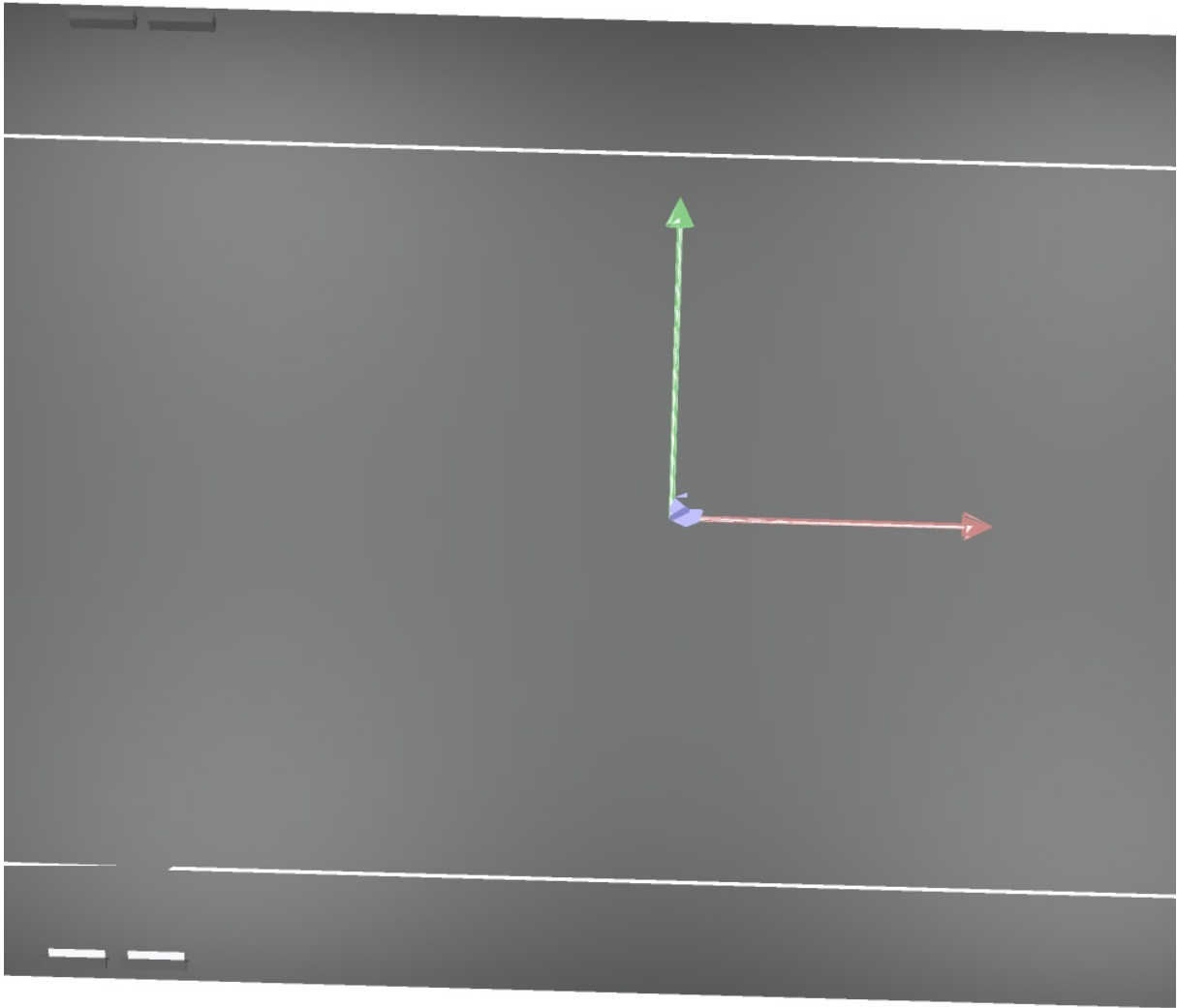
Scale 1 : 161

List of the Calculation Grids

No.	Designation	Position [m]			Size [m]		Rotation [°]		
		X	Y	Z	L	W	X	Y	Z
1	Calculation Grid(PA)	0.000	0.000	0.000	20.000	10.000	0.0	0.0	0.0
2	Calculation Grid(TA)	0.000	0.000	0.000	20.000	10.000	0.0	0.0	0.0

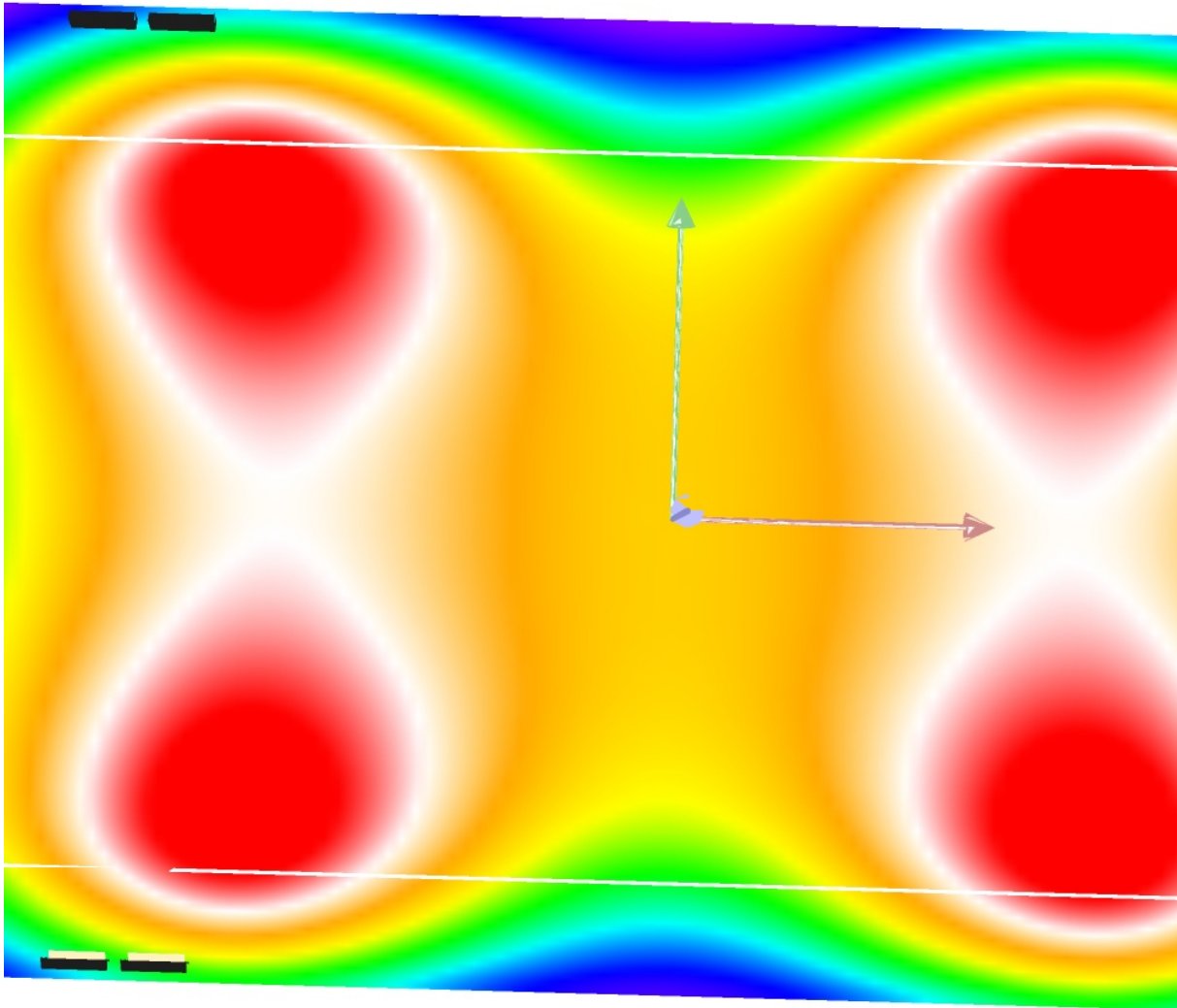
Operator
Telephone
Fax
e-Mail

Outdoor / 3D Rendering



Operator
Telephone
Fax
e-Mail

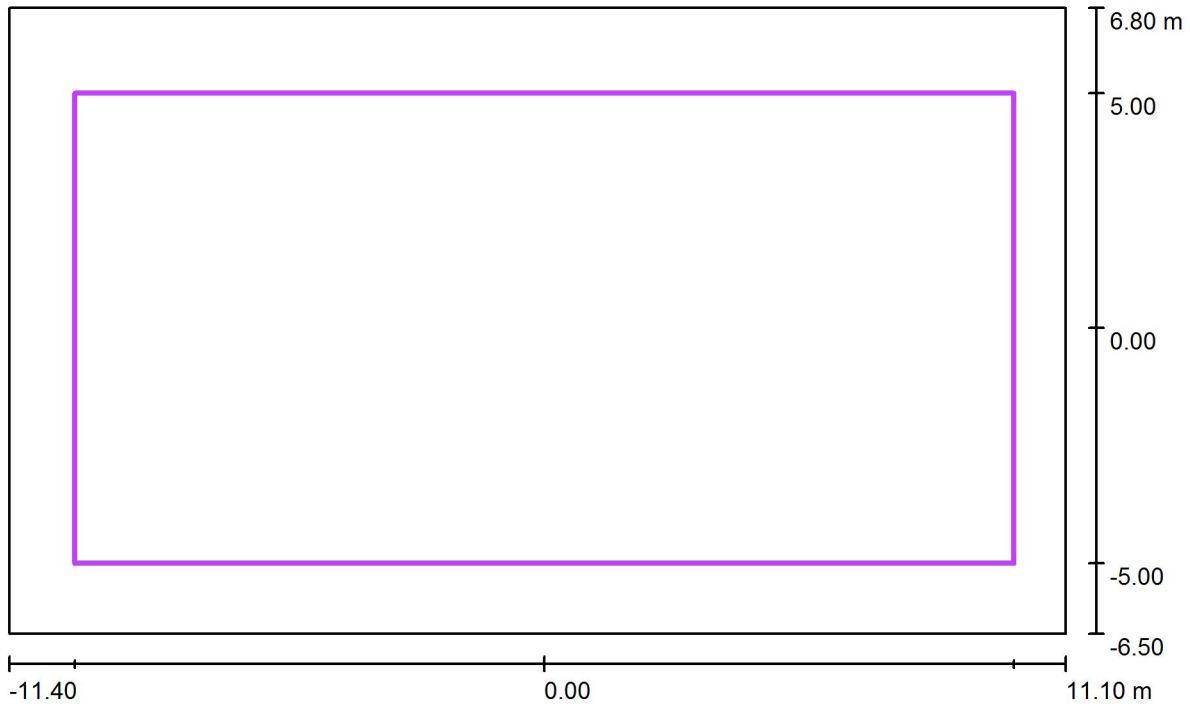
Outdoor / False Colour Rendering



100 162.50 225 287.50 350 412.50 475 537.50 600 lx

Operator
 Telephone
 Fax
 e-Mail

Outdoor / Calculation Grid(PA) / Summary



Scale 1 : 161

Position: (0.000 m, 0.000 m, 0.000 m)
 Size: (20.000 m, 10.000 m)
 Rotation: (0.0°, 0.0°, 0.0°)
 Type: Normal, Grid: 13 x 7 Points
 Belongs to the following sport arena: Padel

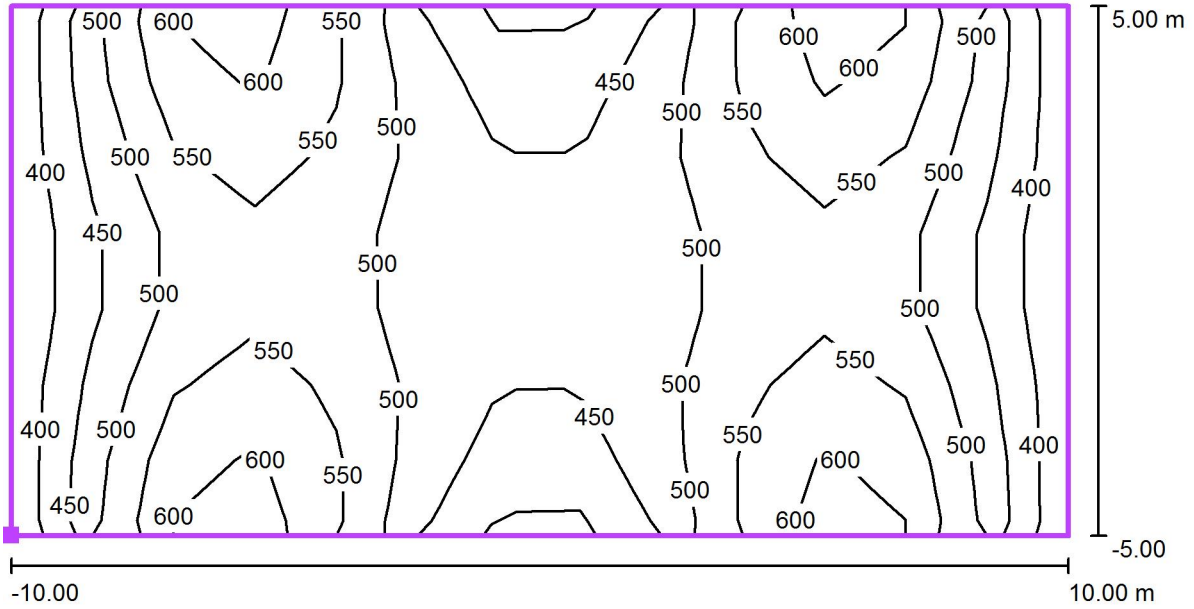
Results overview

No.	Type	E_{av} [lx]	E_{min} [lx]	E_{max} [lx]	$u0$	E_{min} / E_{max}	$E_{h,m} / E_m$	H [m]	Camera
1	perpendicular	502	392	634	0.78	0.62	/	0.000	/

$E_{h,m} / E_m$ = Relationship between middle horizontal and vertical illuminance, H = Measuring Height

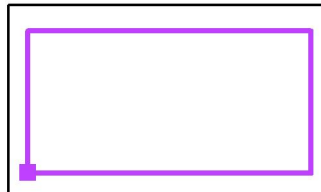
Operator
Telephone
Fax
e-Mail

Outdoor / Calculation Grid(PA) / Isolines (E, Perpendicular)



Values in Lux, Scale 1 : 143

Position of surface in external scene:
Marked point: (-10.000 m, -5.000 m, 0.000 m)

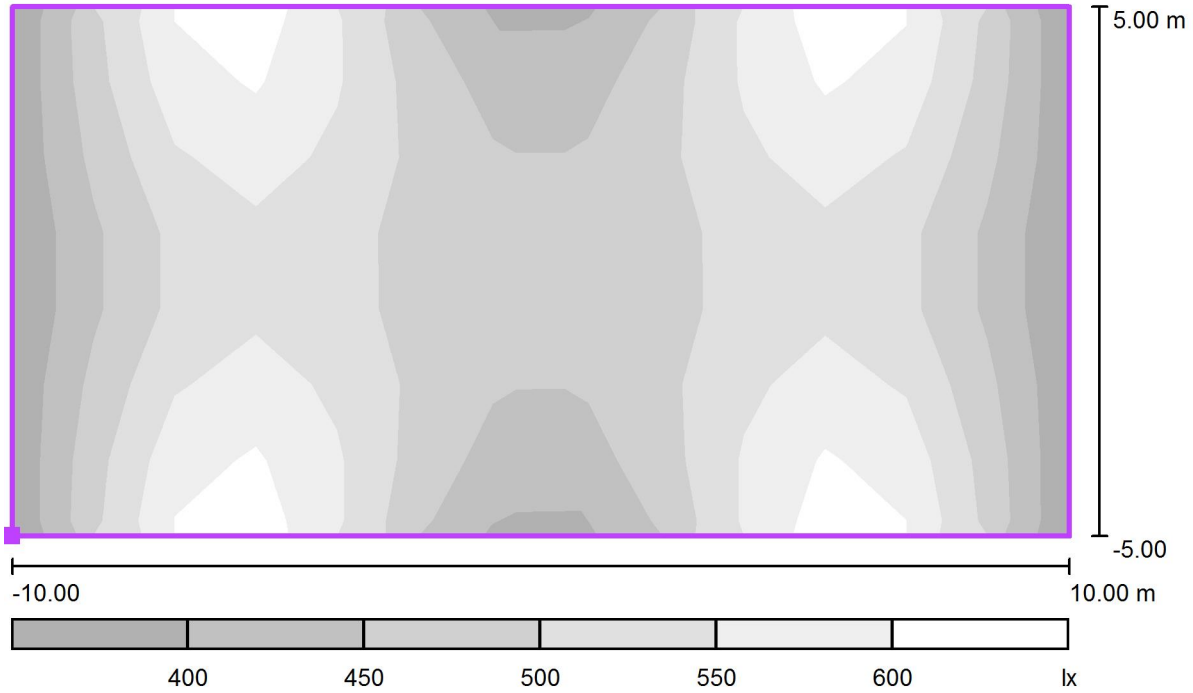


Grid: 13 x 7 Points

E_{av} [lx]	E_{min} [lx]	E_{max} [lx]	u0	E_{min} / E_{max}
502	392	634	0.78	0.62

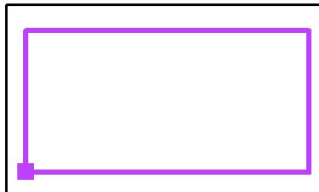
Operator
Telephone
Fax
e-Mail

Outdoor / Calculation Grid(PA) / Greyscale (E, Perpendicular)



Scale 1 : 143

Position of surface in external scene:
Marked point: (-10.000 m, -5.000 m, 0.000 m)

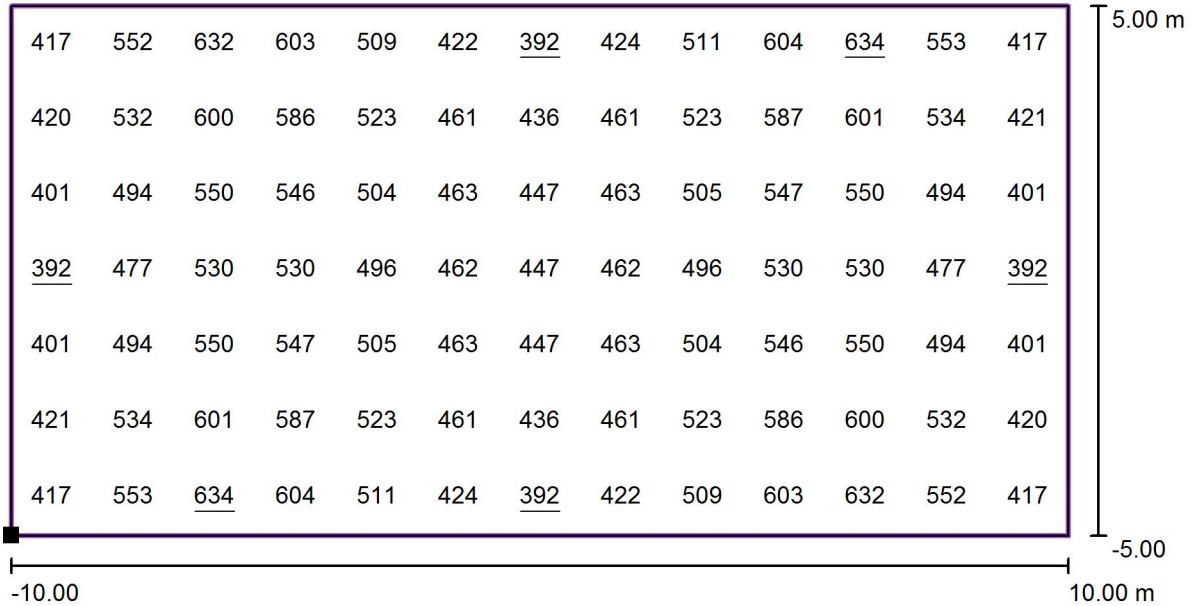


Grid: 13 x 7 Points

E_{av} [lx]	E_{min} [lx]	E_{max} [lx]	u0	E_{min} / E_{max}
502	392	634	0.78	0.62

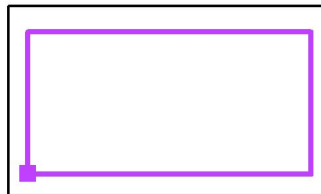
Operator
Telephone
Fax
e-Mail

Outdoor / Calculation Grid(PA) / Value Chart (E, Perpendicular)



Values in Lux, Scale 1 : 143

Position of surface in external scene:
Marked point: (-10.000 m, -5.000 m, 0.000 m)



Grid: 13 x 7 Points

E_{av} [lx]
502

E_{min} [lx]
392

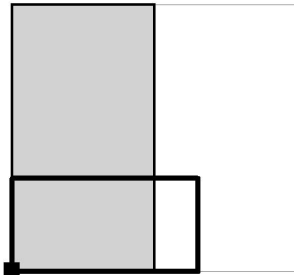
E_{max} [lx]
634

u_0
0.78

E_{min} / E_{max}
0.62

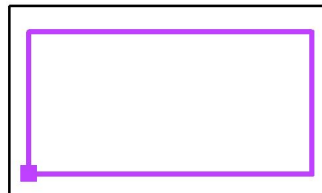
Operator
Telephone
Fax
e-Mail

Outdoor / Calculation Grid(PA) / Table (E, Perpendicular)



Current Selection
 Further Selections

Position of surface in external scene:
Marked point: (-10.000 m, -5.000 m, 0.000 m)



9.286	417	552	632	603	509	422	<u>392</u>	424	511	604
7.857	420	532	600	586	523	461	436	461	523	587
6.429	401	494	550	546	504	463	447	463	505	547
5.000	<u>392</u>	477	530	530	496	462	447	462	496	530
3.571	401	494	550	547	505	463	447	463	504	546
2.143	421	534	601	587	523	461	436	461	523	586
0.714	417	553	<u>634</u>	604	511	424	<u>392</u>	422	509	603
m	0.769	2.308	3.846	5.385	6.923	8.462	10.000	11.538	13.077	14.615

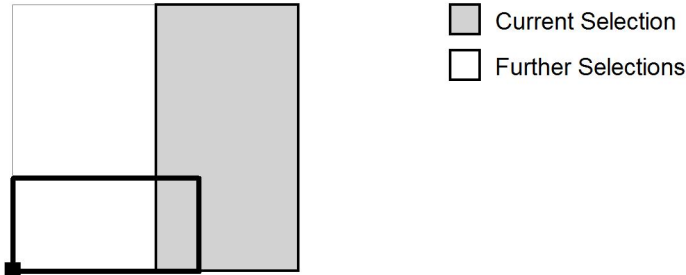
Attention: The coordinates refer to the image above. Values in Lux.

Grid: 13 x 7 Points

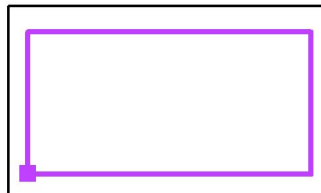
E_{av} [lx]	E_{min} [lx]	E_{max} [lx]	u0	E_{min} / E_{max}
502	392	634	0.78	0.62

Operator
Telephone
Fax
e-Mail

Outdoor / Calculation Grid(PA) / Table (E, Perpendicular)



Position of surface in external scene:
Marked point: (-10.000 m, -5.000 m, 0.000 m)



9.286	<u>634</u>	553	417
7.857	601	534	421
6.429	550	494	401
5.000	530	477	<u>392</u>
3.571	550	494	401
2.143	600	532	420
0.714	632	552	417
m	16.154	17.692	19.231

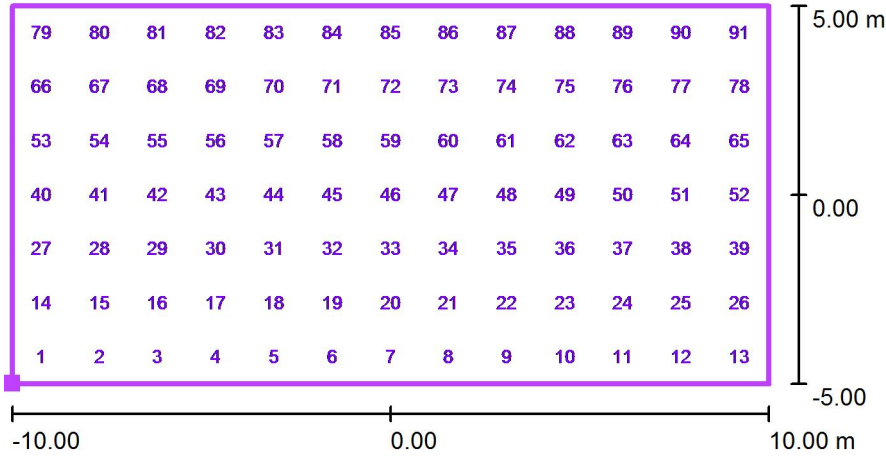
Attention: The coordinates refer to the image above. Values in Lux.

Grid: 13 x 7 Points

E_{av} [lx]	E_{min} [lx]	E_{max} [lx]	u0	E_{min} / E_{max}
502	392	634	0.78	0.62

Operator
Telephone
Fax
e-Mail

Outdoor / Calculation Grid(PA) / Point values (E, perpendicular)



Position of surface in external scene:
Marked point: (-10.000 m, -5.000 m, 0.000 m)



No.	Position [m]			Value [lx]
	X	Y	Z	
1	-9.231	-4.286	0.000	417
2	-7.692	-4.286	0.000	553
3	-6.154	-4.286	0.000	634
4	-4.615	-4.286	0.000	604
5	-3.077	-4.286	0.000	511

Quantity Points: 91

E_{av} [lx]	E_{min} [lx]	E_{max} [lx]	u0	E_{min} / E_{max}
502	392	634	0.78	0.62

Operator
Telephone
Fax
e-Mail

Outdoor / Calculation Grid(PA) / Point values (E, perpendicular)

Position of surface in external scene:
Marked point: (-10.000 m, -5.000 m, 0.000 m)



No.	Position [m]			Value [lx]
	X	Y	Z	
6	-1.538	-4.286	0.000	424
7	0.000	-4.286	0.000	392
8	1.538	-4.286	0.000	422
9	3.077	-4.286	0.000	509
10	4.615	-4.286	0.000	603
11	6.154	-4.286	0.000	632
12	7.692	-4.286	0.000	552
13	9.231	-4.286	0.000	417
14	-9.231	-2.857	0.000	421
15	-7.692	-2.857	0.000	534
16	-6.154	-2.857	0.000	601
17	-4.615	-2.857	0.000	587
18	-3.077	-2.857	0.000	523
19	-1.538	-2.857	0.000	461
20	0.000	-2.857	0.000	436
21	1.538	-2.857	0.000	461
22	3.077	-2.857	0.000	523
23	4.615	-2.857	0.000	586
24	6.154	-2.857	0.000	600
25	7.692	-2.857	0.000	532
26	9.231	-2.857	0.000	420
27	-9.231	-1.429	0.000	401
28	-7.692	-1.429	0.000	494
29	-6.154	-1.429	0.000	550
30	-4.615	-1.429	0.000	547
31	-3.077	-1.429	0.000	505
32	-1.538	-1.429	0.000	463

Quantity Points: 91

E_{av} [lx]	E_{min} [lx]	E_{max} [lx]	u0	E_{min} / E_{max}
502	392	634	0.78	0.62

Operator
Telephone
Fax
e-Mail

Outdoor / Calculation Grid(PA) / Point values (E, perpendicular)

Position of surface in external scene:
Marked point: (-10.000 m, -5.000 m, 0.000 m)



No.	Position [m]			Value [lx]
	X	Y	Z	
33	0.000	-1.429	0.000	447
34	1.538	-1.429	0.000	463
35	3.077	-1.429	0.000	504
36	4.615	-1.429	0.000	546
37	6.154	-1.429	0.000	550
38	7.692	-1.429	0.000	494
39	9.231	-1.429	0.000	401
40	-9.231	0.000	0.000	392
41	-7.692	0.000	0.000	477
42	-6.154	0.000	0.000	530
43	-4.615	0.000	0.000	530
44	-3.077	0.000	0.000	496
45	-1.538	0.000	0.000	462
46	0.000	0.000	0.000	447
47	1.538	0.000	0.000	462
48	3.077	0.000	0.000	496
49	4.615	0.000	0.000	530
50	6.154	0.000	0.000	530
51	7.692	0.000	0.000	477
52	9.231	0.000	0.000	392
53	-9.231	1.429	0.000	401
54	-7.692	1.429	0.000	494
55	-6.154	1.429	0.000	550
56	-4.615	1.429	0.000	546
57	-3.077	1.429	0.000	504
58	-1.538	1.429	0.000	463
59	0.000	1.429	0.000	447

Quantity Points: 91

E_{av} [lx]	E_{min} [lx]	E_{max} [lx]	u0	E_{min} / E_{max}
502	392	634	0.78	0.62

Operator
Telephone
Fax
e-Mail

Outdoor / Calculation Grid(PA) / Point values (E, perpendicular)

Position of surface in external scene:
Marked point: (-10.000 m, -5.000 m, 0.000 m)



No.	Position [m]			Value [lx]
	X	Y	Z	
60	1.538	1.429	0.000	463
61	3.077	1.429	0.000	505
62	4.615	1.429	0.000	547
63	6.154	1.429	0.000	550
64	7.692	1.429	0.000	494
65	9.231	1.429	0.000	401
66	-9.231	2.857	0.000	420
67	-7.692	2.857	0.000	532
68	-6.154	2.857	0.000	600
69	-4.615	2.857	0.000	586
70	-3.077	2.857	0.000	523
71	-1.538	2.857	0.000	461
72	0.000	2.857	0.000	436
73	1.538	2.857	0.000	461
74	3.077	2.857	0.000	523
75	4.615	2.857	0.000	587
76	6.154	2.857	0.000	601
77	7.692	2.857	0.000	534
78	9.231	2.857	0.000	421
79	-9.231	4.286	0.000	417
80	-7.692	4.286	0.000	552
81	-6.154	4.286	0.000	632
82	-4.615	4.286	0.000	603
83	-3.077	4.286	0.000	509
84	-1.538	4.286	0.000	422
85	0.000	4.286	0.000	392
86	1.538	4.286	0.000	424

Quantity Points: 91

E_{av} [lx]	E_{min} [lx]	E_{max} [lx]	u0	E_{min} / E_{max}
502	392	634	0.78	0.62

Operator
 Telephone
 Fax
 e-Mail

Outdoor / Calculation Grid(PA) / Point values (E, perpendicular)

Position of surface in external scene:
 Marked point: (-10.000 m, -5.000 m, 0.000 m)



No.	Position [m]			Value [lx]
	X	Y	Z	
87	3.077	4.286	0.000	511
88	4.615	4.286	0.000	604
89	6.154	4.286	0.000	634
90	7.692	4.286	0.000	553
91	9.231	4.286	0.000	417

Quantity Points: 91

E_{av} [lx]	E_{min} [lx]	E_{max} [lx]	u0	E_{min} / E_{max}
502	392	634	0.78	0.62