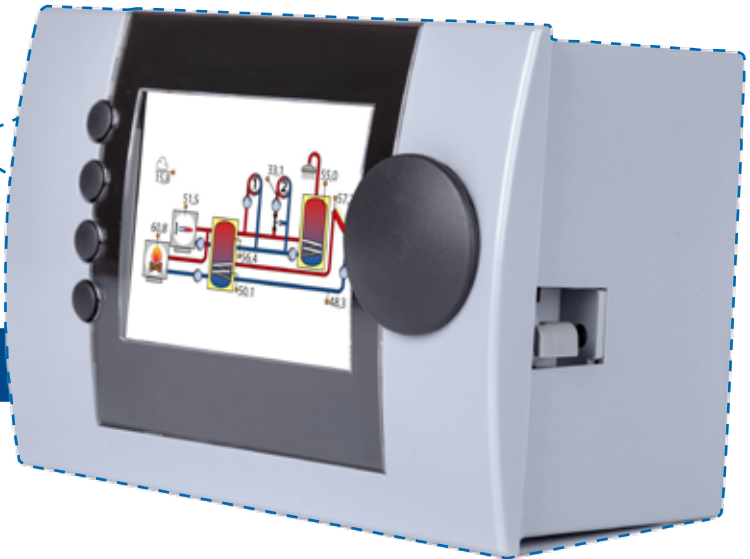


smartEcon Heat Control

HEATING SYSTEM CONTROLLER FOR HEAT GENERATION AND DISTRIBUTION

System controller for up to 2 heat generators, 3 heating circuits and domestic hot water preparation with integration of solar thermal, solid fuel boiler and/or circulation pump



CUSTOMER BENEFITS

Clear and logical overview of the entire heating system:

- full graphic colour display
- display of current temperatures
- animated icons for heat generator, pumps, mixers and other loads

Customization possible (configuration via emz):

- adaptation of menu structure, user levels, functions and hydraulic schemes

Quick and easy commissioning thanks to preset parameters and selection of preconfigured hydraulic systems

Simple and intuitive operation via symbol-supported plain-text display

Convenient remote access and visualization to the smart Econ Cloud via the integrated Ethernet port:

- reduced travelling expenses thanks to remote servicing
- straightforward access via WiFi to a host of terminals for time-saving plant monitoring
- permanent safety thanks to active error signalling feature

CAN system bus for comfortable and safe extension

System update possible via integrated microUSB interface

Integrated activation of high-efficiency pumps via PWM/0-10V

smartEcon HEAT CONTROL EQUIPMENT LEVELS

Heat Control Family	HCM	HCW 810	HCW 1620	HCB SUD	HCB TUMD	HCB TUMMD
Number of inputs for temperature sensor PT1000	8	8	16	4	7	8
thereof switchable (potential-free or temperature input or pulse counter)	8	8	16	4	7	8
Outside temperature sensor	√	√	√	√	√	√
Boiler sensor	√	√	√	√	√	√
Domestic hot water sensor	√	√	√	√	√	√
Flow sensor	2	2	5	-	1	2
Variable / free sensor inputs	3	3	8	-	3	3
Number of inputs for vortex sensor	1	1	2	-	1	1
Number of analog inputs	2	2	4	2	2	2
Number of relay outputs - make contact, potential-free, max. 3A - for pumps, valves, boiler	3	2	4	1	2	3
Number of relay outputs - make contact, 230V output, not potential-free, max. 3A - for pumps, valves	7	8	16	2	5	7
Energy generator stage 1	√	√	√	√	√	√
Energy generator stage 2 / multifunction output (MFA1)	√	√	√	√	√	√
Unmixed heating circuit / multifunction output (MFA2)	√	√	√	√	√	√
Domestic hot water circuit	√	√	√	√	√	√
Heating circuit with mixing valve and separate pump	2	2	5	-	1	2
Number of outputs PWM / 0-10V switchable	2	2	4	2	2	2
Ethernet port for LAN network	√	√	√	√	√	√
CAN system bus port	√	√	√	√	√	√
Micro USB port for PC connection, configuration update	√	√	√	√	√	√
Full graphic TFT colour display 3.2", 240x320 pixels	√	√	√	√	√	√
Operation via rotary encoder and 4 buttons	√	√	√	√	√	√
Opentherm as optional supplementary module	√	√	√	√	√	√

Operation and efficiency functions

Energy generator

Adjustable minimum temperature	√	√	√	√	√	√
Adjustable charging temperature for domestic hot water	√	√	√	√	√	√
Adjustable minimum pause time	√	√	√	√	√	√
Counter for starts of energy generator	√	√	√	√	√	√
Boiler cascade via fixed starting integral	√	√	√	√	√	√

Heating circuits and additional functions

8 operating modes adjustable (OFF, automatic, day, night, frost, summer, screed, emission measurement)	√	√	√	√	√	√
Separate operating data recording for each output	√	√	√	√	√	√
Adjustable offset (+/-10K) for each sensor	√	√	√	√	√	√
Heating curve separately adjustable for each heating circuit (4-point definition)	√	√	√	√	√	√
Anti-legionella function	√	√	√	√	√	√
Straightforward solar function	√	√	√	-	√	√
Adjustable data for vacation and public holidays	√	√	√	√	√	√

Protective functions

Room anti-freeze function (min. 1x Roomcontrol necessary)	√	√	√	√	√	√
Outside temperature frost protection	√	√	√	√	√	√

Diagnostic and service functions

Sensor error detection	√	√	√	√	√	√
Sensor calibration (+10/-10K)	√	√	√	√	√	√
Operating hours meter for outputs	√	√	√	√	√	√
List of errors	√	√	√	√	√	√

THE emz HEAT CONTROL IS AVAILABLE IN THE FOLLOWING MODELS:

Heat Control Build-in - HCB

User interface with integrated ports for installation into the boiler control panel

Standard dimensions 144x96x75 mm

Type SUD, TUMD or TUMMD



Heat Control Wall - HCW

User interface in high-quality design for wall-mounting with integrated ports

Dimensions 217x220x59 mm

Type 810

Type 1620 incl. extension module for complex systems



Heat Control Modular - HCM

Modular system consisting of user interface in high-quality design for wall-mounting or installation into the boiler control panel

Dimensions 144x96x35 mm

I/O module in DIN rail housing (top hat rail mounting)

Dimensions 157x86x58 mm

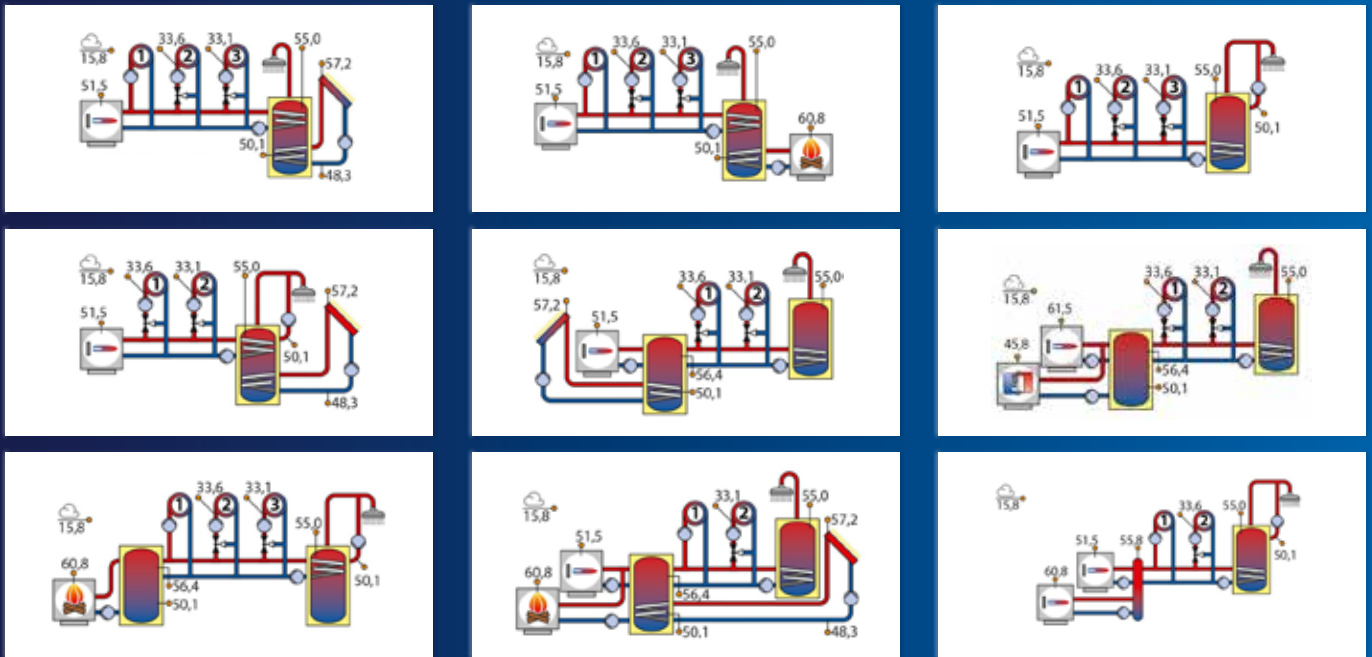


Room Control - RC

Room unit for room temperature measurement and adjustment to temperature setpoint

Party and absence function

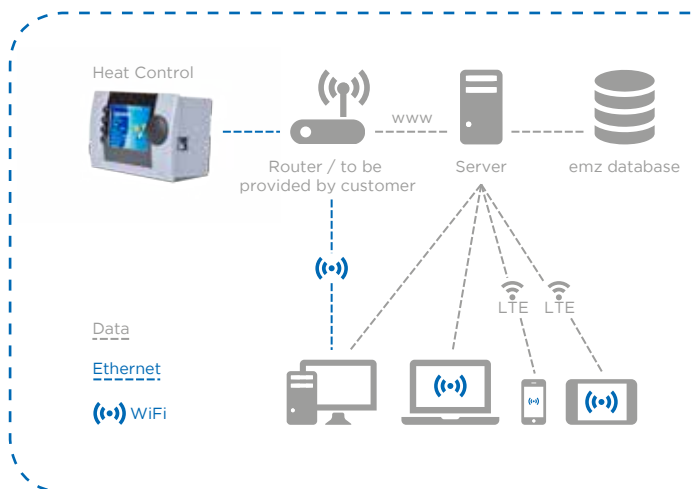




smartEcon Cloud

CONVENIENT REMOTE ACCESS TO
YOUR emz HEAT CONTROL

www.smarteconcloud.com



Version: EN 02/2017

